



**Office of the Monroe County Surveyor**  
**Trohn Enright-Randolph**

---

Health Services Building  
119 West 7<sup>th</sup> Street  
Bloomington, IN 47404  
Phone: (812) 349-2570

Dear User,

The following images were obtained in 2017 by the Office of the Monroe County Surveyor from the State Imaging and Microfilm Laboratory at the Indiana State Archives. The field notes and plats for Greene County are stored on microfilm Reel 4660 at the Indiana State Archives. Each page provided by the State Imaging and Microfilm Laboratory is approximately 18MB. Our office combined the pages by Township & Range and reduced the resulting pdfs. This process may have caused some degradation in quality. We will provide unreduced images of specific pages if required. Please contact us at 812-349-2570 or at [SurveyorsOffice@co.monroe.in.us](mailto:SurveyorsOffice@co.monroe.in.us) to request a higher quality image of any specific page.

The pdfs are bookmarked with the original page numbers as assigned by the State Imaging and Microfilm Laboratory.

Be prepared to provide the county name, reel number, and the required page numbers when requesting full sized images.

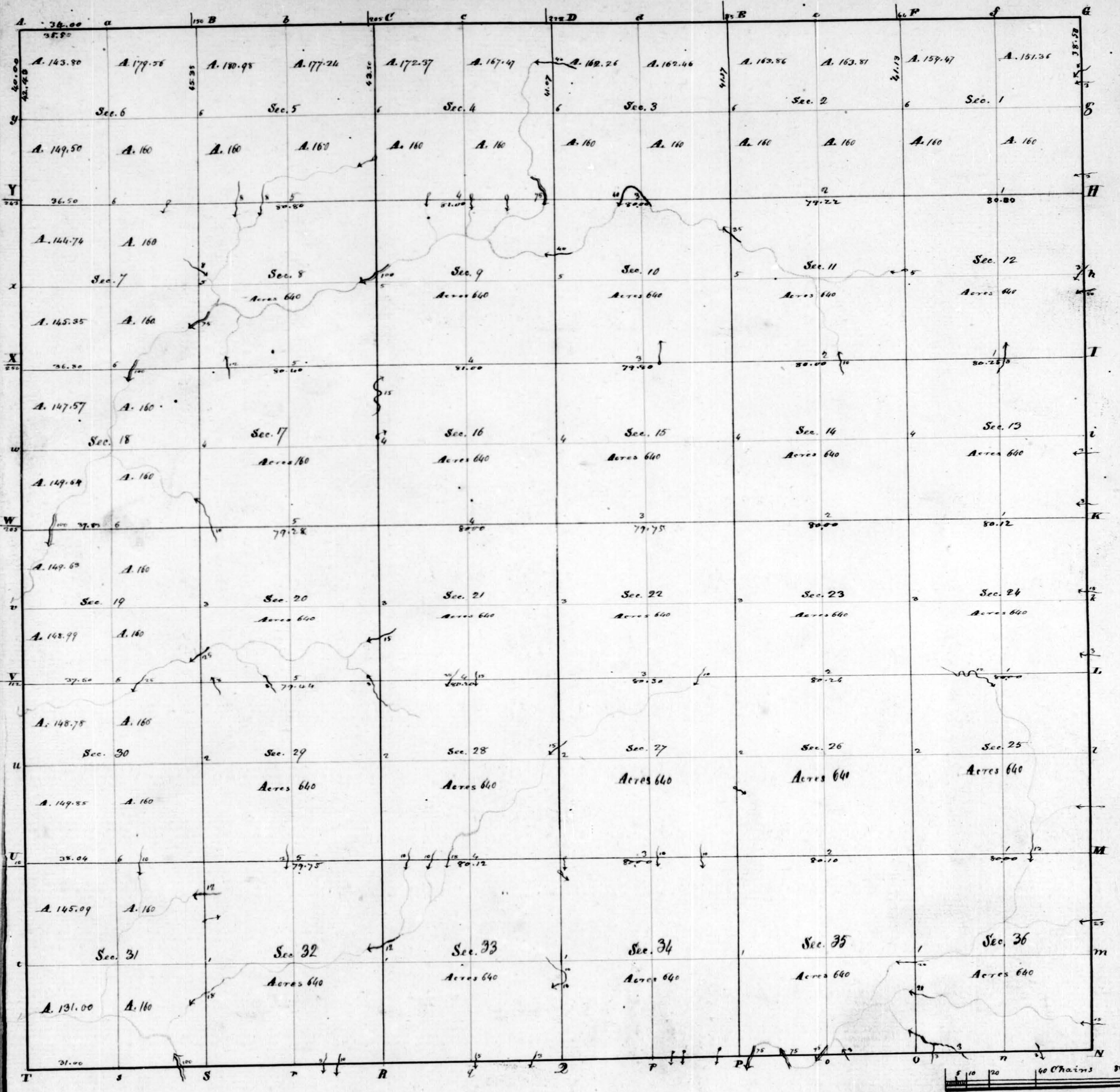
If you would like a DVD of an entire county, please provide us with one DVD per county along with a self-addressed, stamped envelope.

Trohn Enright-Randolph  
Monroe County Surveyor

T 7 N

R 4 W





Township N° VII North, Range N° IV West 2nd M.

Surveyed by Arthur Henrie 1815

Description of the Soil on the interior Sectional lines.

Section	Quality &c.	Between Sections	Between Sections
35	Land Silty & Brushy - Timber Oak & Hickory	28.3	Land Rolling rich Soil - Timber Beech, Oak & Poplar
36	ditto	33.34	ditto
25	ditto	27.34	ditto
24	ditto	27.28	ditto
23	Land Rolling Thin Soil - Timber Oak & Hickory	22.27	ditto
22	ditto	21.22	Rolling Thin Soil
21	ditto	15.22	ditto
20	ditto	15.16	ditto
19	ditto	10.15	ditto
18	ditto	9.10	Land Rolling - Timber Beech, Oak & Poplar
17	ditto	3.10	Good farming land
16	ditto	11.3	ditto
15	Land Rolling Thin Soil - Timber Same	32.33	ditto
14	ditto	28.33	ditto
13	Land Silty Thin Soil - Timber Same	28.29	Land Silty - Timber Beech, Oak & Hickory
12	ditto	21.28	ditto
11	ditto	16.24	ditto
10	ditto	20.21	ditto
9	ditto	16.17	ditto
8	Land Rolling rich Soil - Timber Beech, Oak & Poplar	9.16	ditto
7	ditto		
6	ditto		
5	ditto		
4	ditto		
3	ditto		
2	ditto		
1	ditto		



Township N<sup>o</sup> 7 North of Range N<sup>o</sup> 4 West of the 2<sup>nd</sup> Mer. Ind. *ch. 117.*

South Boundary.

April 14<sup>th</sup> 18.11. From the cor of T<sup>3</sup> 617 N 17 35 W  
 West On the South Boundary of Sec. 36. T<sup>3</sup> 11 R 4 W  
 26.00 To a Brook 3 links wide, corner.  
 40.00 Set a 1/4 Sec post from whike,  
 Hickory 12 in diam bears S 10 W 15 links dist, & a  
 Bent. 18 " " " N 5 W 39 " "  
 60.00 A Brook 3 links wide, corner N.  
 71.00 " Do 3 " " " "  
 80.00 Set apart for the cor of Sec 35 & 36 from whike,  
 Sugar 9 in diam bears S 66 E 16 links dist, & a  
 Do 10 " " " N 45 W 37 " "  
 Hilby Oak land.

West On the South Boundary of Sec. 35. T<sup>3</sup> 11 R 4 W  
 30.00 A Brook 3 links wide, corner N.  
 40.00 Set a 1/4 Sec post from whike,  
 Bent 15 in diam bears S 22 W 17 links dist, & a  
 Oak 15 " " " N 11 W 21 " "  
 43.00 A Brook 1/5 links wide, corner S W.  
 59.00 " Do 75 " " " N. W.  
 77.00 " Do 75 " " " S. W.  
 80.00 Set apart for the cor of Sec. 34 & 35 from whike,  
 Dogrook 6 in diam bears S 72 E 3 links dist, & a  
 Sugar. 6 " " " N 70 W 12 " "  
 Hilby Stony Oak land.

West On the South Boundary of Sec 34. T<sup>3</sup> 11 R 4 W  
 10.00 A Spring corner S.  
 25.00 " Do " "  
 30.00 " Do " "  
 40.00 Set a 1/4 Sec post from whike,  
 Bent 30 in diam bears S 75 W 14 links dist, & a



Township N. 7. North of Range N. 4 West of the 2<sup>nd</sup> Mer. Ind.   
 ch. lly.

### South Boundary.

April 14<sup>th</sup> 18.11. From the cor of T. 36 R. 34 N. 4 W.   
 West On the South Boundary of Sec. 36. T. 7. N. 4 W.   
 26.00 To a Brook 3 links wide, corner   
 40.00 Set a 1/4 sec post from whike,   
 Hickory 12 in diam bears S 107 N. 15 links dist, & a   
 Bent. 18 " " " N 57 W 39 " "   
 60.00 A Brook 3 links wide, corner N.   
 71.00 " Do 3 " " " N.   
 80.00 Set a post for the cor of Sec. 35 & 36 from whike,   
 Sugar 9 in diam bears S 56 E. 16 links dist, & a   
 Do. 10 " " " N 45 W 37 " "   
 Hilby Oak land.

West On the South Boundary of Sec. 35. T. 7. N. 4 W.   
 30.00 A Brook 3 links wide, corner N.   
 40.00 Set a 1/4 sec post from whike,   
 Bent 15 in diam bears S 27 W 17 links dist, & a   
 Oak 15 " " " N 11 W 21 " "   
 43.00 A Brook 1/5 links wide, corner S. W.   
 59.00 " Do. 75 " " " N. W.   
 77.00 " Do. 75 " " " S. W.   
 80.00 Set a post for the cor of Sec. 34 & 35 from whike,   
 Dogwood 6 in diam bears S 72 E. 3 links dist, & a   
 Sugar. 6 " " " N 70 W 12 " "   
 Hilby Stony Oak land.

West On the South Boundary of Sec. 34. T. 7. N. 4 W.   
 10.00 A Spring corner S.   
 25.00 " Do " " "   
 30.00 " Do " " "   
 40.00 Set a 1/4 sec post from whike,   
 Bent 30 in diam bears S 75 W 14 links dist, & a



## T. N. F. N. R. N. 4 W. D. M. M. And.

8000 Hickory 9 in dia: bears N 89 E. 28 units dist. 1  
 Set a post for the cor of sec. 33 & 34 from whike,  
 Sugar 12 in dia: bears N 85 E. 28 units dist, 8 a  
 Hickory 12, , , S 37 W. 20 , ,  
 Poor hilly stony Oak land.

West. On the South Boundary of Sec. 33. T. 7. N. R. 4 W.  
 13.00 A Brook 3 units wide, corner S. W.  
 38.00 " Do 5 , , , S.  
 4000 Set a 1/4 Sec post from whike,  
 Buck 9 in dia: bears S 52 E. 13 units dist, 8 a  
 W Oak 30 , , , S 55 W 24 , ,  
 8000 Set a post for the cor of sec. 32 & 33 from whike,  
 Buck 6 in dia: bears South 2 lks dist, 8 a  
 Do 15 , , , N 79 E. 13 , ,  
 Good new Timb Sugar, Buck, Oak,

West. On the South Boundary of Sec 32 T. 7. N. R. 4 W  
 20.00 A Brook 10 units wide, corner S.  
 25.00 " Do 5 , , , S.  
 4000 Set a 1/4 Sec post from whike,  
 Buck 10 in dia: bears N 39 W 7 units dist, 8 a  
 Sugar 14 , , , N 83 E. 42 , ,  
 8000 Set a post for the cor of sec 31 & 32 from whike,  
 Buck 9 in dia: bears N 48 E. 18 units dist, 8 a  
 Do 16 , , , S 65 W 29 , ,  
 Good meadow land Timb Sugar Buck & Oak

West On the South Boundary of Sec 31. T. 7. N. R. 4 W  
 15.00 A Creek 100 units wide, corner W  
 4000 Set a 1/4 Sec post from whike,  
 Sugar 14 in dia: bears N 59 W 7 units dist, 8 a  
 W Oak 30 , , , S 74 E. 39 , ,

## T. N. F. N. R. N. 4 W. D. M. M. And.

8000 Set a temp post for the cor of S. 36 & 7. N. R. 4 W.

## East Boundary.

A 35.

North Between Sec. 31. & 36. T. 7. N. R. 4 W.  
 " On the East Boundary of Sec. 36. T. 7. N. R. 4 W.  
 11.50 A Brook 15 units wide, corner W.  
 4000 Set a 1/4 Sec post from whike,  
 W Oak 18 in dia: bears S 70 E. 7 units dist, 8 a  
 W Oak 20 , , , S 70 W 16 , ,  
 51.00 A Brook 25 units wide, corner W.  
 61.50 A W Oak 20 in dia:  
 80.00 Set a post for the cor of Sec. 25 & 36 from whike,  
 W Oak 12 in dia: bears S 23 E. 41 units dist, 8 a  
 Do 16 , , , N 67 W. 51 , ,  
 Hilly poor Oak land.

North On the East Boundary of Sec 25 T. 7. N. R. 4 W  
 20.00 A Spring corner W.  
 29.50 A W Oak 20 in dia: in the line.  
 4000 Set a 1/4 Sec post from whike,  
 W Oak 16 in dia: bears N 23 E. 15 units dist, 8 a  
 Do 18 , , , S 60 E. 45 , ,  
 8000 Set a post for the cor of Sec. 24 & 25 from whike,  
 Hickory 12 in dia: bears N 57 E. 4 units dist, 8 a  
 Poplar 36 , , , S 10 E. 18 , ,  
 Poor hilly stony W. Oak land.

North On the East Boundary of Sec. 24. T. 7. N. R. 4 W.  
 15.00 A Brook 3 units wide, corner W. W.  
 4000 Set a 1/4 Sec post from whike,  
 W Oak 16 in dia: bears S 57 W. 24 units dist, 8 a  
 Buck 10 , , , S 21 E. 37 , ,  
 47.00 A Brook 15 units wide, corner W.



80.00 Set a post for the cor of Sec. 13 & 24 from which  
Dogwood 5 in dia: bears N 18 W 5 links dist; 8a  
Do 4 " " " S 45 E 8 " "  
Lands flat timber Oak, Gum, & Poplar.

North On the East Boundary of Sec. 16. T. 7. N. R. 4 W.

10.00 To a Brook 3 links mid, corner W.

30.00 " " Do. 3 " " "

40.00 Set a 7/4 sec post from which  
W Oak 30 in dia: bears S 50 E 20 links dist; 8a  
Do. 16 " " " S 41 W 30 " "

80.00 Set a post for the cor of Sec. 12 & 13 from which  
W Oak 48 in dia: bears S 16 W 16 links dist; 8a  
Do. 16 " " " S 17 E 48 " "  
Healthy Oak land.

North On the East Boundary of Sec. 12. T. 7. N. R. 4 W.

30.00 A Brook 50 links mid, corner W.

40.00 Set a 7/4 sec post from which  
Beck 16 in dia: bears S 5 W 33 links dist; 8a  
Do. 15 " " " N 38 W 31 " "

42.00 A Brook 3 links mid, corner S W.

80.00 Set a post for the cor of Sec. 18 & 19 from which  
Sugar 12 in dia: bears N 81 E 24 links dist; 8a  
W Oak 18 " " " N 70 W 26 " "  
Wetlands timber Oak & Beck.

North On the East Boundary of Sec. 1. T. 7. N. R. 4 W.

8.00 A Brook 3 links mid, corner W.

12.00 A Poplar 24 in dia: "

40.00 Set a 7/4 sec post from which  
Sugar 16 in dia: bears S 22 E 10 links dist; 8a  
Do. 15 " " " N 4 W 18 " "

55.00 To a Brook 3 links mid, corner W.

60.00 " " Do. 8 " " " S W.

78.50 Set 125 links East of the Temp. post & moved it  
for the cor of Sec. 1. 6. 31 & 36. S. 78.5 N. R. 3 & 4 W from  
which a Beck 24 in dia: bears S 76 W 15 links dist  
and on Ash 24 " " " S 78 E 32 " "  
Land rich with timber Sugar Beck, & Poplar.

North Boundary.

A 44

East On a Random line between T. 7 & 8 N. R. 4 W. 5 miles  
74 ch. Set 2 ch North of the cor of Sec. 1. 6. 31  
& 36. T. 7 & 8 N. R. 3 & 4 W. Corrected & marked  
ed the line West.

West On the South Boundary of Sec. 36. T. 8 N. R. 4 W.

40.00 Set a 7/4 sec post from which  
Sugar 16 in dia: bears S 60 W 5 links dist; 8a  
Beck 16 " " " N 85 E 28 " "

50.00 A Brook 3 links mid, corner W.

80.00 Set a post for the cor of Sec. 35 & 36 from which  
Beck 24 in dia: bears S 32 W 13 links dist; 8a  
Do. 6 " " " N 69 E 28 " "  
Rich Sugar tree land

West On the South Boundary of Sec. 35. T. 8 N. R. 4 W.

40.00 Set a 7/4 sec post from which a  
Beck 14 in dia: bears S 20 E 13 links dist.

41.00 A Brook 3 links mid, corner W W.

65.00 A Do. " " " " "

80.00 Set a post for the cor of Sec. 34 & 35 from which  
Walnut 18 in dia: bears N 50 E 18 links dist; 8a  
Beck 12 " " " S 71 W 28 " "  
Lands & timber same.



## T. N. 7. N. R. N. 4. W. 2nd Mer Ind.

West On the South Boundary of Sec. 34 T. 8. N. R. 4. W.  
 40.00 Set a 7/4 Sec post from whike,  
 Buck 10 in dia. bears N 25 E. 5 links dist, & a  
 Do 6 " " S 64 N. 8 " "  
 66.00 To a corner 125 lks mid, corner S.  
 80.00 Set a post for the cor of Sec 33 & 34 from whike,  
 Buck 12 in dia. bears N 80 E. 18 links dist, & a  
 Sugar 16 " " N 82 W. 33 " "  
 Rich Hills

West On the South Boundary of Sec 33. T. 8. N. R. 4. W.  
 30.00 At Brook 4 links mid, corner S.  
 40.00 Set a 7/4 Sec post from whike,  
 Sugar 16 in dia. bears N 60 W. 15 links dist, & a  
 Buck 8 " " S 45 E. 34 " "  
 50.00 At Brook 10 links mid, corner S.  
 65.00 " Do. 4 " " N E.  
 80.00 Set a post for the cor. of Sec 32 & 33 from whike,  
 W Oak 36 in dia. bears N 58 W. 7 links dist, & a  
 Buck 12 " " N 85 E. 30 " "  
 Sand & rich timber Sugar, Buck Oak, &c.

West On the South Bound. of Sec 32. T. 8. N. R. 4. W.  
 25.00 At Brook 5 links mid, corner N. W.  
 40.00 Set a 7/4 Sec post from whike,  
 Elm 16 in dia. bears S 21 E. 39 lks dist, & a  
 W Oak 14 " " S 83 N. 28 " "  
 48.00 At Brook 5 links mid, corner S. W.  
 60.00 " Do. 5 " " N W.  
 80.00 Set a post for the cor of Sec 31 & 32 from whike,  
 Sum 24 in dia. bears East 21 links dist, & a  
 Buck 8 " " S 80 W. 23 " "  
 Sand & rich timber Buck, Sugar, Oak, &c.

## T. N. 8. N. R. N. 4. W. 2nd Mer Ind.

West On the South Boundary of Sec. 31. T. 8. N. R. 4. W.  
 40.00 Set a post for the cor of Sec 31 from whike,  
 Dogwood 6 in dia. bears N 45 W. 7 links dist, & a  
 Buck 30 " " S 58 E. 24 " "  
 61.00 At Brook 6 links mid, corner N. W.  
 74.00 Struck temp. post cor of Sec 16. 31 & 36. T. 8. N. R. 4. W.  
 R. 45 W. from whike,  
 Sugar 16 in dia. bears S 21 W. 17 links dist, & a  
 Buck 18 " " North 22 " "  
 Sand & timber same as last mile. April 17. 1811.

West Boundary A. 4. 1.  
 North On the East Boundary of Sec 36. T. 7. N. R. 5. W.  
 April. 16. 1811.  
 25.00 At Creek 75 links mid, corner S. W.  
 40.00 At Oak 36 in dia. stands for the cor of Sec.  
 80.00 Set a post for the cor. of Sec 25 & 36 from whike,  
 Hick 12 in dia. bears S 68 E. 5 links dist, & a  
 W Oak 17 " " N 20 E. 33 " "  
 Level bottom land.

North On the East Boundary of Sec 25. T. 7. N. R. 5. W.  
 19.00 At Brook 3 links mid, corner W.  
 34.00 " Do. 3 " " "  
 40.00 Set a 7/4 Sec post from whike,  
 Buck 16 in dia. bears S 63 W. 14 links dist, & a  
 Dogwood 6 " " N 10 E. 37 " "  
 46.00 At Brook 5 links mid, corner W.  
 66.00 " Do. 15 " " W.  
 80.00 Set a post for the cor of Sec 24 & 25 from whike,  
 Elm 10 in dia. bears N 21 E. 12 links dist, & a  
 Maple 6 " " S 5 E. 14 " "  
 Sand & timber as above.



## T. N. of N. R. No 4 W 2nd Mer. Ind.

North On the East Boundary of Sec 24 T. 7. N. R. 5 W.  
 40.00 Set a 1/4 Sec post from whike,  
 Sugar 10 in dia: bears S43 E. 14 links dist, 8 a  
 Reeb 30 " " " N49 W 22 " "  
 47.00 A Brook 100 links mid, corner NW.  
 80.00 Set a post for the cor of Sec 13 & 24 from whike,  
 Sugar 8 in dia: bears S46 W 8 links dist, 8 a  
 Do 16 " " " N24 E. 28 " "  
 Good rich land Timber Reeb, Sugar, Poplar &c.

North On the East Boundary of Sec 23 T. 7. N. R. 5 W.  
 5.00 A Brook 3 links mid, corner E.  
 12.00 " Do. 3 " " " "  
 35.00 " Do. 3 " " " "  
 40.00 Set a 1/4 Sec post from whike,  
 Maple 9 in dia: bears West 3 links dist, 8 a  
 W Oak. 16 " " " N24 E. 24 " "  
 80.00 Set a post for the cor. of Sec. 12 & 13 from whike,  
 Reeb 12 in dia: bears N54 W. 14 links dist, 8 a  
 Reeb. 16 " " " S50 E. 49 " "  
 Hilly, Timber Reeb, Sugar, Poplar,

North On the East Boundary of Sec of Sec 12, T. 7. N. R. 5 W.  
 20.00 A Brook 3 links mid, corner E.  
 40.00 Set a 1/4 Sec post from whike,  
 Hick 16 in dia: bears S75 E. 24 links dist, 8 a  
 Gum 16 " " " N63 W 18 " "  
 80.00 Set a post for the cor of Sec 1 & 12 from whike,  
 Hick 18 in dia: bears N10 W. 16 links dist, 8 a  
 Gum. 24 " " " N66 E. 25 " "  
 Good Oak land.

North On the East Boundary of Sec 1. T. 7. N. R. 5 W.

## T. N. of N. R. No 4 W 2nd Mer. Ind.

12.50 To a N. Oak. 30 in dia:  
 39.50 A Brook 5 links mid, corner W.  
 40.00 Set a 1/4 Sec post from whike,  
 Dogwood 5 in dia: bears S60 W. 18 links dist, 8 a  
 Reeb. 16 " " " N24 E. 8 " "  
 50.00 Crossed a fresh blazing running about S65 W.  
 80.00 Set a temp. post for the cor of Sec. 1 & 6. 31 & 36.  
 T. 7. N. R. 4 & 5 W.

Surveyed by  
 Alexander Holmes.  
 Deputy Sur.

## Subdivisions

North Between Sec. 35 & 36. T. 7. N. R. 4 W.  
 7.00 A Brook 20 links mid, corner NW  
 19.50 " Do. 20 " " " "  
 39.50 " " " " " "  
 40.00 Set a 1/4 Sec post from whike,  
 Sugar 10 in dia: bears N31 E. 5 links dist, 8 a  
 Hornwood 8 " " " S87 W 4 " "  
 80.00 Set a post for the cor of Sec. 25, 26, 35 & 36 from whike,  
 W Oak. 12 in dia: bears N32 E. 16 links dist, 8 a  
 Hick 6 " " " S36 E. 15 " "  
 Land hilly and brushy Timber Oak & Hick.

East On a Random line between Sec. 25 & 36. T.  
 40.00 Set a temp. 1/4 Sec post.  
 59.00 A Brook 12 links mid, corner S.  
 80.00 Intersect the East Boundary 20 links North of the  
 cor of Sec. 25 & 36. Land the same.

West On the true line between Sec. 25 & 36.  
 40.00 Set a 1/4 Sec temp. post at the cor. dist on the true line



from which, W Oak 15 in dia: bears N 84 W. 29 lks dist.  
and a Do. 20 " " " N 66 W. 49 " "  
80.00 To the cor of Sec 25, 26, 35 & 36.

North Return Sec. 25 & 26. T. 7. N. R. 4 W.  
40.00 Set a post for the cor of 1/4 Sec from which,  
Dogwood 3 in dia: bears N 89 W. 16 links dist. & a  
Sugar, 8 " " " N 28 E. 23 " "  
80.00 Set a post for the cor of Sec 23, 24, 25 & 26 from which,  
Bech 8 in dia: bears N 6 E. 21 links dist. & a  
Do 7 " " " S 63 E. 30 " "  
Land the same.

East On a Random line between Sec 24 & 25  
22.00 At Brook 12 links mid, corner N. W.  
25.00 To where mk crossed the above brook 5 times  
40.00 Set a temp 7/4 Sec post  
80.00 Intersect the East Boundary 30 links North of the  
post cor of Sec 24 & 25. Land the same.

West On the true line between Sec. 24 & 25.  
40.00 Set the temp 7/4 Sec post at the ar dist. on the true line  
from which, Poplar 8 in dia: bears S 44 E. 8 links dist.  
and a Gum 10 " " " S 66 W. 9 " "  
80.00 To the cor of Sec. 23, 24, 25 & 26.

North Return Sec. 23 & 24 T. 7. N. R. 4 W.  
40.00 Set a 1/4 Sec post from which,  
Maple 15 in dia: bears S 23 E. 22 links dist. & a  
Ash 5 " " " N 33 E. 14 " "  
80.00 Set a post for the cor. of Sec. 13, 14, 23 & 24 from which,  
W Oak. 18 in dia: bears S 70 E. 20 links dist. & a  
Do. 18 " " " S 87 W. 33 " "

Land rolling thin soil Timber Oak & Hickory

East On a Random line between Sec. 13 & 24. T. 7. N. R. 4 W.  
40.00 Set a temp 7/4 Sec post.  
80.12 Intersect the East Boundary 10 links South of the  
cor of Sec 13 & 24. Land the same.

West On the true line between Sec. 13 & 24. T. 7. N. R. 4 W.  
40.06 Set the temp 7/4 Sec post at the ar dist. on the true line  
from which, Cherry 15 in dia: bears S 25 E. 22 lks dist.  
and a Bech 15 " " " N 41 E. 28 " "  
80.12 To the cor of Sec. 13, 14, 23 & 24.

North Return Sec. 13 & 14. T. 7. N. R. 4 W.  
40.00 Set a 1/4 Sec post from which,  
Hickory 9 in dia: bears S 46 W. 16 links dist. & a  
Do. 10 " " " N 66 E. 16 " "  
80.00 Set a post for the cor. of Sec. 11, 12, 13 & 14 from which,  
Dogwood 5 in dia: bears N 51 E. 23 links dist. & a  
Do. 4 " " " S 10 W. 7 " "  
Land the same.

East On a Random line between Sec. 12 & 13.  
40.00 Set a temp 7/4 Sec post  
45.00 At Brook 8 links mid, corner N. E.  
80.25 Intersect the East Boundary 20 links South of the  
post cor of Sec. 12 & 13. Land the same.

West On the true line between Sec. 12 & 13.  
40.12 Set the temp 7/4 Sec post at the ar dist. on the true line  
from which, Dogwood 3 in dia: bears S 30 W. 7 lks dist.  
and a W Oak. 20 " " " N 71 E. 14 " "  
80.25 To the cor of Sec. 11, 12, 13 & 14.



## T. N. 7. N. R. N. 4 W. 2nd Mer. Ind.

Ch. W. North Between Sec. 11 & 12 T. 7 N. R. 4 W.  
 40.00 Set a 1/4 Sec post from which  
 NW Oak 20 in dia. bears S 40 E. 11 links dist. & a  
 Hickory 5 " " " " S 63 E. 10 " "  
 45.00 A Spring corner N.  
 54.00 A Beech 18 in dia. in the line.  
 80.00 Set a post for the cor of Sec. 1, 2, 11 & 12 from which  
 Sugar 15 in dia. bears S 67 W. 7 links dist. & a  
 Do. 15 " " " " S 89 E. 17 " "  
 Same the same

East On a Random line between Sec. 18 & 19  
 40.00 Set a temp. 1/4 Sec post.  
 80.00 Intersect the N. 1/2 line or East Boundary 73 links E.  
 of the cor of Sec. 1 & 12 Same the same

West On the True line between Sec. 1 & 12  
 40.00 Set the temp. 1/4 Sec post at the cor. dist. on the true line  
 from which, Beech 18 in dia. bears N 64 W. 10 links dist.  
 and a Do. 12 " " " " S 63 E. 23 " "  
 80.00 To the cor. of Sec. 1, 2, 11 & 12.

North Between Sec. 1 & 2  
 36.50 A Poplar 20 in dia. "  
 40.00 Set a post for the cor of 1/4 Sec from which  
 Beech 12 in dia. bears N 30 E. 7 links dist. & a  
 Do. 15 " " " " S 12 E. 17 " "  
 81.13 Intersect the N. Boundary 64 links East of the post  
 cor of Sec. 35 & 36. T. 8 N. R. 4 W. and set a post for  
 the cor. " " " " 1 & 2 from which  
 Beech 5 in dia. bears N 78 W. 33 links dist. & a  
 Do. 5 " " " " S 55 E. 22 " "  
 Land good for farming.

Completed

## T. N. 7. N. R. N. 4 W. 2nd Mer. Ind.

Ch. W. North Between Sec. 34 & 35. T. 7 N. R. 4 W.  
 40.00 Set a 1/4 Sec post from which  
 Dogwood 3 in dia. bears S 24 W. - 16 links dist. & a  
 N Oak 18 " " " " S 87 W. 22 " "  
 80.00 Set a post for the cor of Sec. 26, 27, 34 & 35 from which  
 Beech 10 in dia. bears S 40 E. 10 links dist. & a  
 Do. 12 " " " " S 67 W. 5 " "  
 Same the same.

East On a Random line between Sec. 26 & 35.  
 40.00 Set a temp. 1/4 Sec post.  
 80.10 Intersect the N. 1/2 line 20 links north of the post  
 cor of Sec. 25, 26, 35 & 36. Same the same.

West On the True line between Sec. 26 & 35.  
 40.05 Set the temp. 1/4 Sec post at the cor. dist. on the true line  
 from which, N Oak 12 in dia. bears S 84 E. 13 links dist.  
 and a Hickory 12 " " " " N 14 W. 14 " "  
 80.10 To the cor. of Sec. 26, 27, 34 & 35.

North Between Sec. 26 & 27. T. 7 N. R. 4 W.  
 32.00 A Spring corner S.E.  
 40.00 Set a 1/4 Sec post from which  
 Beech 4 in dia. bears N 57 W. 23 links dist. & a  
 Do. 3 " " " " S 44 E. 9 " "  
 80.00 Set a post for the cor of Sec. 22, 23, 26 & 27 from which  
 a N Oak 20 in dia. bears S 23 E. 4 links dist. & a  
 Dogwood 6 " " " " S 89 E. 18 " "  
 Same Hickory 10 in dia. Same.

East On a Random line between Sec. 23 & 26.  
 40.00 Set a temp. 1/4 Sec post.  
 80.26 Intersect the N. 1/2 line 30 links North of the post



Cor of Sec. 23, 24, 25 & 26. Land the same.

West On the true line between Sec. 23 & 26.

40.00 Set the temp. 7/4 Sec. post at the cor. dist. on the true line from which, Hickory 10 in diam. bears N 85 E. 8 links dist. and a Poplar 9 " " S 20 W 22 " "

80.00 To the cor. of Sec. 22, 23, 26 & 27.

North Between Sec. 22 & 23. T. F. N. R. 472.

40.00 Set a 7/4 Sec. post from which, W Oak 18 in diam. bears S 51 W. 11 links dist. & a Hickory 11 " " S 56 E 21 " "

80.00 Set a post for the cor. of Sec. 14, 15, 22, & 23 from which, W Oak 20 in diam. bears S 76 E. 32 links dist. & a Do. 20 " " S 82 W. 19 " "

Land the same.

East On a Random line between Sec. 14 & 23.

40.00 Set a temp. 7/4 Sec. post.

80.00 Intersect the N & S line 15 links South of the post cor. of Sec. 13, 14, 23 & 24. Land the same.

West On the true line between Sec. 14 & 23.

40.00 Set the temp. 7/4 Sec. post at the cor. dist. on the true line from which, Hickory 5 in diam. bears S 48 E. 13 links dist. and a Dogwood 3 " " N 5 W 22 " "

80.00 To the post cor. of Sec. 14, 15, 22 & 23.

North Between Sec. 14 & 15

40.00 Set a 7/4 Sec. post from which, Hickory 6 in diam. bears N 36 E. 9 links dist. & a Do. 6 " " S 64 W 15 " "

80.00 Set a post for the cor. of Sec. 10, 11, 14 & 15 from which,

B. Oak 40 in diam. bears N 86 E. 18 links dist. & a Dogwood 5 " " S 12 E. 24 " "

Land the same.

East On a Random line between Sec. 11 & 14.

40.00 Set a temp. 7/4 Sec. post.

48.00 A Brook 10 links wide, comes N. W.

80.00 Intersect the N & S line 9 links South of the post cor. of Sec. 11, 12, 13 & 14. Land the same.

West On the true line between Sec. 11 & 14.

40.00 Set the temp. 7/4 Sec. post at the cor. dist. on the true line from which, Poplar 7 in diam. bears N 28 W. 4 links dist. and a Do. 7 " " S 1 E. 17 " "

80.00 To the cor. of Sec. 10, 11, 14 & 15.

North Between Sec. 15 & 11. T. F. N. R. 472.

40.00 Set a 7/4 Sec. post from which,

Sugar 8 in diam. bears S 83 E. 12 links dist. & a Birch 15 " " N 50 W 31 " "

60.00 A Brook 35 links wide, comes N. W.

80.00 Set a post for the cor. of Sec. 2, 3, 10, & 11 from which, Birch 10 in diam. bears S 1 E. 31 links dist. & a Do. 14 " " N 78 W. 14 " "

Land the same.

East On a Random line between Sec. 2 & 11.

40.00 Set a temp. 7/4 Sec. post.

79.22 Intersect the N & S line 47 links South of the post cor. of Sec. 1, 2, 11 & 12. Land the same.

Land rolling track for 10; timber: Birch, Oak & Poplar, &c.



## T. N. J. N. R. No 4 W 2nd Mer. Ind.

West On the true line between Sec 2 & 11.  
 39.61 Set the temp. 74 Sec post at the ar. dist. on the true line  
 from whikey Ash 30 in dia. bears N 85 W 13 the dist.  
 and a Sugar 10 " " " N 84 E 19 "  
 79.22 To the cor. of Sec. 2, 3, 10, & 11.

North Between Sec. 2 & 3 T. N. J. N. R. 4 W.  
 40.00 Set a 74 Sec post from whikey.  
 Sugar 5 in dia. bears N 89 E 4 links dist. 8 a  
 Hickory 9 " " " S 4 W 28 "  
 81.17 Intersect the N. Boundary at a Beech whikey stands  
 85 links East of the post cor. of Sec. 3 & 13. T. N. J. N. R. 4 W.  
 Same the same.

North Between Sec. 33 & 34 T. N. J. N. R. 4 W.  
 19.50 At Brook 10 links midy, corner S. W.  
 31.50 " Do. 10 " " " S. E.  
 40.00 Set a 74 Sec post from whikey.  
 Beech 8 in dia. bears S 34 E 14 links dist. 8 a  
 Do. 12 " " " N 85 W 11 " "  
 70.00 A Spring corner S. E.  
 80.00 Set a post for the cor. of Sec. 27, 28, 33 & 34 from whikey.  
 Beech 12 in dia. bears N 42 E 26 links dist. 8 a  
 Do. 8 " " " S 86 W 44 " "  
 Same the same.

East On a Random line between Sec. 27 & 34.  
 1.00 A Spring corner S.  
 40.00 Set a temp. 74 Sec post.  
 45.50 At Brook 10 links midy, corner S.  
 63.50 " Do. 10 " " " S. E.  
 80.00 Intersect the N. B. line at the cor. of Sec. 26, 27, 34 & 35.  
 Same the same.

## T. N. J. N. R. No 4 W 2nd Mer. Ind.

West On the true line between Sec. 27 & 34.  
 40.00 Set the temp. 74 Sec post at the ar. dist. on the true line  
 from whikey Beech 12 in dia. bears S 80 E 20 the dist.  
 and a Sugar 10 " " " S 4 E 17 "  
 80.00 To the cor. of Sec. 27, 28, 33 & 34.

North Between Sec. 27 & 28 T. N. J. N. R. 4 W.  
 40.00 Set a 74 Sec post from whikey.  
 W. Oak 18 in dia. bears S 31 E 15 links dist. 8 a  
 Dogwood 3 " " " S 31 W 13 " "  
 54.51 At Brook 15 links midy, corner S. W.  
 80.00 Set a post for the cor. of Sec. 21, 22, 27 & 28 from whikey.  
 Poplar 40 in dia. bears N 62 E 39 links dist. 8 a  
 Dogwood 8 " " " S 47 W 35 " "  
 Same the same.

East On a Random line between Sec. 22 & 27.  
 40.00 Set a temp. 74 Sec post.  
 65.00 At Brook 10 links midy, corner S. W.  
 80.30 Intersect the N. B. line at the post cor. of Sec. 22, 23,  
 26 & 27. Same the same.

West On the true line between Sec. 22 & 27.  
 40.15 Set the temp. 74 Sec. post at the ar. dist. on the true line  
 from whikey Dogwood 4 in dia. bears N 39 E 15 the dist.  
 and a W. Oak 16 " " " S 39 W 7 " "  
 80.30 To the cor. of Sec. 21, 22, 27 & 28.

North Between Sec. 21 & 22.  
 40.00 Set a 74 Sec post from whikey.  
 W. Oak 15 in dia. bears N 21 W 7 links dist. 8 a  
 Beech 8 " " " N 80 E 11 " "  
 80.00 Set a post for the cor. of Sec. 15, 16, 21 & 22 from whikey.



## T. N. of N. R. N. 4 W. D. and M. Ind.

At 3 in dist. bears N 11 W 8 links dist; 8 a  
 Hickory 10 ; ; S 28 E. 22 ;  
 Sand rolling thin soil. Timber same

East. On a Random line between Sec. 15 & 22

4000 Set a temporary 1/4 Sec. post.

79.75 Intersect the N 15 line 20 links North of the post cor of  
 Sec. 14, 15, 22 & 23. Land the same.

West On the line line between Sec. 15 & 22

39.87 1/4 Set the temporary 1/4 Sec. post at the av. dist. on the true line  
 from which, N Oak 20 in dist. bears S 28 W 32 links dist  
 and a Dogwood 4 ; ; N 37 W 18 ;

49.45 To the cor. of Sec. 15, 16, 21 & 22

North Return Sec. 15 & 16. T. N. R. 4 W.

4000 Set a 1/4 Sec. post from which

Beck 20 in dist. bears N 40 W 33 links dist; 8 a

Do. 20 ; ; S 23 E 47 ;

80.00 Set a post for the cor. of Sec. 9, 10, 15 & 16 from which

Beck 18 in dist. bears N 57 W 7 links dist; 8 a

Maple 10 ; ; S 12 E 31 ;

Land the same.

East On a Random line between Sec. 10 & 15

4000 Set a temporary 1/4 Sec. post for

51.50 A Spring corner N.

79.80 Intersect the N 15 line 30 links South of the post cor  
 of Sec. 10, 11, 14 & 15 Land the same.

West On the line line between Sec. 10 & 15

39.90 Set the temporary 1/4 Sec. post at the av. dist. on the true line  
 from which, Hickory 12 in dist. bears S 12 W 20 links dist

## T. N. of N. R. N. 4 W. D. and M. Ind.

Sum 12 in dist. bears N 26 W 31 links dist;  
 49.80 To the cor. of Sec. 9, 10, 15 & 16.

North Return Sec. 9 & 10. T. N. R. 4 W.

4000 Set a 1/4 Sec. post from which

Sugar 10 in dist. bears S 25 E 30 links dist; 8 a

Hickory 10 ; ; N 28 E 07 ;

52.00 At Brook 40 links mid, corner N.

80.00 Set a post for the cor. of Sec. 3, 4, 9 & 10 from which

Beck 35 in dist. bears N 38 E 27 links dist; 8 a

Do. 9 ; ; S 87 E 28 ;

Land rolling timber Beck, Oak, & Poplar

East On a Random line between Sec. 3 & 10. T. N. R. 4 W.

32.50 At Brook 40 links mid, corner N.

39.00 " Do 40 ; ; N. R.

40.00 Set a temporary 1/4 Sec. post.

80.00 Intersect the N 15 line at the cor. of Sec. 2, 3, 10 & 11  
 Good farming land.

West On the line line between Sec. 3 & 10. T. N. R. 4 W.

4000 Set the temporary 1/4 Sec. post at the av. dist. on the true line  
 from which, Beck 5 in dist. bears S 35 E 19 links dist

and a N. Walnut, 8 ; ; N 32 W 18 ;

80.00 To the cor. of Sec. 3, 4, 9 & 10.

North Return Sec. 3 & 10. T. N. R. 4 W.

4.00 A Spring corner N.

40.00 Set a 1/4 Sec. post from which

Beck 4 in dist. bears S 31 E 8 links dist; 8 a

Do. 10 ; ; N 68 W 13 ;

65.00 At Brook 40 links mid, corner N. W.

81.07 Intersect the N. Boundary 222 links East of the post.



## T. N. 7. N. R. N. 4 W. 2nd Mer. Sud.

Cor of Sec 33 & 34 T. 8 N. R. 4 W. Set apart for the  
 " " 3 & 4 from which  
 W Oak 15 in dia: bears S 77 W 22 links dist, & a  
 Sumner 7 1/2 " " N 77 W 5 " "  
 Land the same.

North Between Sec 32 & 33.

40.00 Set a 1/4 Sec post from which  
 Buck 10 in dia: bears N 18 E. 22 links dist, & a  
 Do. 6 " " " S 18 W 4 " "  
 46.00 A Brook 12 links mid, Corner W.  
 80.00 Set a post for the cor of Sec 28, 29 33 & 34 from which  
 Sugar 6 in dia: bears N 74 E. 22 links dist, & a  
 Sumner 3 1/2 " " " N 66 W 14 " "  
 Land the same.

East On a Random line between Sec 28 & 33.

15.00 A Brook 10 links mid, Corner S.  
 21.00 A Do. 10 " " " "  
 27.00 " Do. 10 " " " "  
 40.00 Set a temp 1/4 Sec post.  
 80.20 Intersect the N 75 line 25 links North of the post  
 cor of Sec 27, 28 33 & 34 Land the same

West On the True line between Sec 28 & 33.

40.00 Set the temp 1/4 Sec post at the ar. dish on the true line  
 from which Buck 20 in dia: bears N 56 E. 24 links dist  
 and a Do. 12 " " " S 37 W 8 " "  
 80.00 To the cor of Sec 28, 29 32 & 33.

North Between Sec 28 & 29 T. 7 N. R. 4 W.

40.00 Set a 1/4 Sec post from which as  
 W Oak 15 in dia: bears N 11 W 7 links dist, & a

## T. N. 7. N. R. N. 4 W. 2nd Mer. Sud.

Set a 15 in dia: bears S 57 W. 15 links dist, & a  
 65.00 Spring Corner NW.  
 76.50 " " " S. W.  
 80.00 Set a post for the cor of Sec 20, 21 28 & 29 from which  
 Buck 10 in dia: bears N 77 E. 8 links dist, & a  
 Do. 10 " " " N 67 W 23 " "  
 Land the same.

East On a Random line between Sec 21 & 28.

25.00 Spring Corner W.  
 34.00 A Brook 35 links mid, Corner S. W.  
 40.00 Set a temp 1/4 Sec post.  
 47.00 A Brook 15 links mid, Corner S. W.  
 80.20 Intersect the N 75 line 20 links North of the post cor  
 of Sec 21, 22, 27 & 28. Land the same.

West On the True line between Sec 21 & 28.

40.10 Set the temp 1/4 Sec post at the ar. dish on the true line  
 from which Sugar 8 in dia: bears N 22 E. 8 links dist  
 and a W Oak 15 " " " S 30 W 12 " "  
 50.20 To the cor of Sec 20, 21, 28 & 29.

East On a Random line between Sec 21 & 16.

20.00 Set a temp 1/4 Sec post.  
 80.00 Intersect the N 75 line 30 links North of the post  
 cor of Sec 15, 16, 21 & 22 Land the same.

West On the True line between Sec 16 & 21.

40.00 Set the temp 1/4 Sec post at the ar. dish on the true line  
 from which W Oak 21 in dia: bears N 39 W 10 links dist  
 and a Hickory 24 " " " South 24 " "  
 80.00 To the cor of Sec 16, 17, 20 & 21.



## T. N. of N. R. N. 4 W. 2nd Mer. Ind.

Cov of Sec 33 & 34. T. N. R. 4 W. Set apart for the  
 " " 3 & 4 from which  
 W Oak 15 in dia. bears S 27 W 22 links dist. & a  
 Immord 4 " " N 44 W 5 " "  
 Land the same.

North Between Sec. 32 & 33.

40.00 Set a 1/4 Sec post from which  
 Buck 10 in dia. bears N 18 E. 22 links dist. & a  
 Do. 6 " " S 18 W 4 " "  
 46.00 A Brook 12 links mid, corner N.  
 80.00 Set a post for the cov of Secs 28, 29, 33 & 34 from which  
 Sugar 6 in dia. bears N 74 E. 20 links dist. & a  
 Immord 3 " " N 66 W 14 " "  
 Land the same.

East On a Random line between Secs 28 & 33.

15.00 A Brook 10 links mid, corner S.  
 21.00 A Do. 10 " " " "  
 27.00 " Do. 10 " " " "  
 40.00 Set a temp 1/4 Sec post.  
 80.12 Intersect the N 85 line 25 links North of the post  
 cov of Secs 27, 28, 33 & 34. Land the same.

West On the same line between Secs 28 & 33.

40.06 Set the temp 1/4 Sec post at the ar. dist on the true line  
 from which Buck 20 in dia. bears N 56 E. 24 links dist.  
 and a Do. 12 " " S 37 W 8 " "  
 80.12 To the cov. of Secs 28, 29, 32 & 33.

North Between Secs 28 & 29 T. N. R. 4 W.

40.00 Set a 1/4 Sec post from which  
 W Oak 15 in dia. bears N 11 W 7 links dist. & a

## T. N. of N. R. N. 4 W. 2nd Mer. Ind.

Set a post 15 in dia. bears S 57 W. 15 links dist. & a  
 65.00 Spring corner NW.  
 76.50 " " " S. W.  
 80.00 Set a post for the cov of Secs 20, 21, 28 & 29 from which  
 Buck 10 in dia. bears N 77 E. 8 links dist. & a  
 Do. 10 " " N 67 W 23 " "  
 Land with limits Buck, Oak, & Hickory

East On a Random line between Secs 21 & 28.

25.00 Spring corner N.  
 34.00 A Brook 35 links mid, corner S. W.  
 40.00 Set a temp 1/4 Sec post.  
 47.00 A Brook 15 links mid, corner S. W.  
 80.20 Intersect the N 85 line 20 links North of the post cov.  
 of Secs 21, 22, 27 & 28. Land the same.

West On the same line between Secs 21 & 28.

40.10 Set the temp 1/4 Sec post at the ar. dist on the true line  
 from which Sugar 8 in dia. bears N 22 E. 8 links dist.  
 and a W Oak 15 " " S 30 W 12 " "  
 80.20 To the cov. of Secs 20, 21, 28 & 29.

East On a Random line between Secs 21 & 16.

20.00 Set a temp 1/4 Sec post.  
 80.00 Intersect the N 85 line 30 links North of the post  
 cov of Secs 15, 16, 21 & 22. Land the same.

West On the same line between Secs 16 & 21.

40.00 Set the temp 1/4 Sec post at the ar. dist on the true line  
 from which W Oak 21 in dia. bears N 39 W. 10 links dist.  
 and a Hickory 24 " " South 24 " "  
 80.00 To the cov. of Secs 16, 17, 20 & 21.



T. No 7. N.R. No 4 W 2<sup>nd</sup> Mer. Ind.

North Return Sur 20 & 21 T 7 N.R. 4 W  
 25.00 At Brook 5 links mid, corner W.  
 40.00 Set a 7/4 Sec post from whike,  
 Dogwood 5 in dia. bear N 30 W 17 links dist, 8 a  
 Do. 4 " " S 23 E 7 "  
 80.00 Set a post for the cor. of sec 16, 17, 20 & 21 from whike,  
 W Oak 18 in dia. bear N 81 W 7 links dist, 8 a  
 Dogwood 3 " " N 85 E 24 "  
 Same the same.

North Return Sur 16 & 17 T 7 N.R. 4 W.  
 40.00 Set a 7/4 Sec post from whike,  
 Ironwood - in dia. bear N 41 E 16 links dist, 8 a  
 W Walnut 10 " " S 85 W 22 "  
 42.00 A Spring corner E.  
 43.50 " Do. " "  
 47.00 At Brook 15 links mid, corner N.E.  
 68.50 The same 5 times.  
 80.00 Set a post for the cor. of sec 8, 9, 16 & 17 from whike,  
 Hickory - in dia. bear N 85 W 37 links dist, 8 a  
 Dogwood 3 " " N 72 E 17 "  
 Same the same.

East On a Random line between Sur 9 & 16  
 40.00 Set a temp 7/4 Sec. post  
 81.00 Intersect the N 83 line 31 links North of the post cor  
 of Sec 10, 9, 16 & 15 Same the same

West On the true line between Sur 9 & 16.  
 40.50 Set the temp 7/4 Sec post at the ar dist on the true line  
 from whike, Gum 10 in dia. bear N 55 E 16 links dist,  
 and a Do. 18 " " S 80 E 25 "  
 80.00 To the cor. of Sec 8, 9, 16 & 17

T. No 7. N.R. No 4 W 2<sup>nd</sup> Mer. Ind.

North Return Sur 8 & 9 T 7 N.R. 4 W.  
 40.00 Set a 7/4 Sec post from whike,  
 Buck, 8 in dia. bear S 6 W 28 links dist, 8 a  
 Sugar. 10 " " S 30 E 27 "  
 40.50 At Brook 100 links mid, corner SW.  
 80.00 Set a post for the cor. of sec 4, 5, 8 & 9 At Poplar 6  
 in dia. Stand for the cor.  
 Same hilly rich soil. Timber Black Hickory &  
 Poplar, Oak.

East On a Random line between Sur 4 & 9  
 24.00 A Spring corner S.  
 40.00 Set a temp 7/4 Sec post  
 44.00 A Spring corner S.  
 60.00 " Do. " "  
 77.00 At Creek 75 links mid, corner S.  
 81.00 Intersect the N 83 line 50 links South of the post cor.  
 of Sec 3, 4, 9 & 10. Same the same.

West On the true line between Sur 4 & 9  
 40.50 Set the temp 7/4 Sec post at the ar dist on the true line  
 from whike, Sugar. 12 in dia. bear N 77 E 30 links dist  
 and a Do. 12 " " N 30 E 27 "  
 81.00 To the cor. of Sec 4, 5, 8 & 9.

North Return Sur 4 & 5  
 20.00 A Spring corner W.  
 40.00 Set a 7/4 Sec post from whike,  
 Buck 13 in dia. bear S 84 E 4 links dist, 8 a  
 Elm. 4 " " S 11 W 16 "  
 83.50 Intersect the W Bona 7 203 links East of the post  
 cor of Sec 32 & 33 T 8, N.R. 4 W and set a post  
 " " " 443 from whike



## T. N. 7. N. R. N. 4. W. 2nd Mer Ind.

Beck 10 in dia. bears N 75 E. 4 links dist, 8 a  
 Ironrock 4 " " " N 85 W 33 " "  
 Lands the same.

North Return Sec. 31 132 T. 7. N. R. 4 W.

18.00 A Brook 18 links mid, corner N.

40.00 Set a 7/4 sec post from which,

Beck 18 in dia. bears S 33 E 46 links dist, 8 a

Do. 12 " " " N 66 W 28 " "

57.00 A Spring corner E.

67.00 A Brook 12 links mid, corner N.

80.00 Set a post for the cor of sec. 29, 30, 31 132 from which,

Beck 20 in dia. bears S 1 E 30 links dist, 8 a

Do. 10 " " " N 69 W 13 " "

Lands hilly, rich soil. Timber Oak, 8 Poplar.

East On a Random line between Sec. 29 132

39.00 A Brook 12 links mid, corner S W

40.00 Set a temp 7/4 sec post

79.75 Intersect the N 15 line 16 links South of the post cor.  
 of sec. 28, 29, 30 132. Lands the same.

West On the Iron line between Sec. 29 132

39.87 Set the temp 7/4 sec post at the cor. dist on the Iron line  
 from which, Beck 15 in dia. bears N 15 W 10 links dist  
 and a Do. 18 " " " S 27 E 25 " "

79.75 To the cor. of sec. 29, 30, 31 132

West Return Sec. 30 131 T.

24.50 A Brook 10 links mid, corner S.

40.00 Set a 7/4 sec post from which,

Beck 10 in dia. bears East 5 links dist, 8 a

Do. 18 " " " N 14 E 22 " "

## T. N. 7. N. R. N. 4. W. 2nd Mer Ind.

78.04 Intersect the West Boundary 10 links North of the  
 post cor. of sec. 25 136. T. 7. N. R. 5 W and set a  
 " " " " 30 131 from which,  
 N Oak 18 in dia. bears N 25 E. 23 links dist, 8 a  
 Hick 12 " " " S 20 E 12 " "  
 Lands the same.

North Return Sec. 29 130

23.50 A N Oak 30 in dia.

40.00 Set a 7/4 sec post from which,

Dogwood 8 in dia. bears S 21 W 29 links dist, 8 a

N Oak. 15 " " " N 20 W 14 " "

80.00 Set a post for the cor of sec. 19, 20, 29 130 from which,

Beck 20 in dia. bears S 37 E. 7 links dist, 8 a

Do. 20 " " " N 30 W 27 " "

Lands the same.

East On a Random line between Sec. 20 129

1.50 A Brook 8 links mid, corner N. W.

25.00 " Do. 8 " " " N. W.

40.00 Set a temp 7/4 sec post

74.50 A Brook 8 links mid, corner N. W.

79.44 Intersect the N 15 line 80 links South of the post cor.  
 of sec. 20, 21, 28 129. Lands the same.

West On the Iron line between Sec. 20 129

39.72 Set the temp 7/4 sec post at the cor. dist on the Iron line  
 from which, N Walnut 10 in dia. bears N 13 E. 22 links dist  
 and a Poplar 40 " " " N 74 W 12 " "

79.44 To the cor. of sec. 19, 20, 29 130.

North Return Sec. 19 120 T.

14.00 A Brook 25 links mid, corner S. W.



T. N. F. N. R. N. 472<sup>nd</sup> Mer. Ind.

- 40.00 Set a  $\frac{1}{4}$  Sec post from whike,  
 Sugar 8 in dia: bears N 39 E. 11 links dist; 8 a  
 Bassafal 8, , , N 69 E. 26 , ,  
 80.00 Set a post for the cor. of Sec 17 18 19 20 from whike,  
 Ash 5 in dia: bears S 4 E. - 10 links dist; 8 a  
 Sugar 7, , , S 56 W 18 , ,  
 Same the same.

## West Between Sec 19 20 I.

- 25.00 A Brook 25 links wide corner S.W.  
 40.00 Set a  $\frac{1}{4}$  Sec post from whike,  
 Beech 10 in dia: bears S 27 E. 10 links dist; 8 a  
 Hick 10 , , , S 22 W 18 , ,  
 77.50 Intersect the West Boundary 112 links South of the  
 post cor of Sec. 24 25 T. J. N. R. 5 W and set a  
 " " " " 19 20 from whike,  
 Oak 12 in dia: bears N 5 W. 7 links dist; 8 a  
 Maple 4, , , S 68 W 8 , ,  
 Same the same.

## East On a Random line between Sec. 17 20

- 9.00 A Brook 10 links wide, corner N.W.  
 40.00 Set a temp.  $\frac{1}{4}$  Sec post  
 79.28 Intersect the N 15 line 80 links South of the post cor  
 of Sec 16 17 20 & 21. Same the same.

## West On the true line between Sec. 17 20

- 39.64 Set the temp.  $\frac{1}{4}$  Sec post at the ar. dist on the true line  
 from whike, Hick 18 in dia: bears S 8 E 7 links dist  
 and a Dogwood 5, , , S 4 W 19 , ,  
 79.28 To the cor of Sec 17 18 19 20.

## West Between Sec 18 19 I.

T. N. F. N. R. N. 472<sup>nd</sup> Mer. Ind.

- 40.00 Set a  $\frac{1}{4}$  Sec post from whike,  
 Ash 4 in dia: bears N 78 E. 8 links dist; 8 a  
 Beech 7, , , S 2 W 20 , ,  
 64.00 A Brook 100 links wide, corner S.W.  
 77.83 Intersect the West Boundary 205 links South of the  
 post cor of Sec. 13 24 T. J. N. R. 5 W and set a post  
 for the " " " " 18 19 from whike,  
 Elm 8 in dia: bears N 15 E. 40 links dist; 8 a  
 Oak 30, , , S 44 W 16 , ,  
 Same the same.

## North Between Sec 17 18

- 16.00 A Brook 8 links wide, corner W.  
 22.50 A Sugar. 12 in dia: in the line.  
 40.00 Set a  $\frac{1}{4}$  Sec post from whike,  
 Beech 10 in dia: bears S 15 E. 21 links dist; 8 a  
 Do. 12 , , , N 35 E 16 , ,  
 72.00 A Oak 24 in dia: in the line.  
 80.00 Set a post for the cor of Sec. 7 8 17 18 from whike,  
 Beech 12 in dia: bears S 46 E 7 links dist; 8 a  
 Sugar. 12, , , S 34 W 18 , ,  
 Good farming land.

## East On a Random line between Sec 8 17

- 12.00 A Brook 12 links wide, corner N.W.  
 40.00 Set a temp.  $\frac{1}{4}$  Sec post.  
 80.40 Intersect the N 15 line at the cor of Sec 8 9 16 17  
 Same the same.

## West On the true line between Sec 8 17

- 40.20 Set the temp.  $\frac{1}{4}$  Sec post at the ar. dist on the true line  
 from whike, Beech 10 in dia: bears S 79 E. 38 links dist  
 80.40 To the cor of Sec 7 8 17 18.



## T. N. 7. N. R. No 47 2nd Mer Ind.

West Return Sec 718 T. 7. N. R. 47.  
 25.00 A Brook 100 lks mid, Course S.  
 40.00 Set a 1/4 Sec post from which,  
 Beech 12 in dia: bears S 80 E. 8 lks dist, 8 a  
 Gum 10 " " " N 33 E. 15 " "  
 76.80 Intersect the West Boundary 250 lks South of the post  
 Cor of Sec 12123 T. 7. N. R. 57 and set a post for the  
 " " " 718 from which,  
 W Oak 20 in dia: bears S 50 E. 5 lks dist, 8 a  
 Dogwood 6 " " " S 54 E. 7 " "  
 Land the same.

North Return Sec 718 T.  
 20.00 A Brook 75 lks mid, Course W.  
 40.00 Set a 1/4 Sec post from which,  
 Beech 15 in dia: bears N 78 E. 26 lks dist, 8 a  
 Sugar. 6 " " " S 72 W. 11 " "  
 46.00 A Brook 8 lks mid, Course E.  
 80.00 Set a post for the cor of Sec 5, 6, 7 & 8 from which,  
 Beech 13 in dia: bears S 15 E. 24 lks dist, 8 a  
 W Oak 15 " " " N 22 W. 28 " "  
 Land the same.

East On a Random line between Sec 5 & 8 T. 7. N. R. 47.  
 17.50 A Brook 8 lks mid, Course S.  
 30.00 " do 8 " " "  
 40.00 Set a temp. 1/4 Sec post.  
 80.80 Intersect the N 78 line 60 lks North of the post cor  
 of Sec. 4, 5, 8 & 9 Land the same.

West On the line between Sec 5 & 8  
 40.40 Set the temp. 1/4 Sec post at the ar dist on the line  
 from which, W Oak 20 in dia: bears N 11 W. 18 lks dist

## T. N. 7. N. R. No 47 2nd Mer Ind.

80.80 On W Oak 20 in dia: bears S 11 W. 30 lks dist,  
 At the cor of Sec 5, 6, 7 & 8.

West Return Sec 617.  
 13.50 Spring Course S.  
 40.00 Set a 1/4 Sec post from which,  
 Beech 15 in dia: bears N 81 E. 41 lks dist, 8 a  
 Gum. 18 " " " S 42 W. 38 " "  
 76.50 Intersect the West Boundary 343 lks South of the  
 post cor of Sec 1472 T. 7. N. R. 57 and set a post  
 " " " 617 from which,  
 Beech 20 in dia: bears N 85 W. 18 lks dist, 8 a  
 Hickory 12 " " " N 78 E. 24 " "  
 Land the same.

North Return Sec 586.  
 40.00 Set a 1/4 Sec post from which,  
 Dogwood 4 in dia: bears N 86 E. 16 lks dist, 8 a  
 Sugar. 15 " " " N 58 W. 18 " "  
 85.8 Intersect the North Boundary 150 lks East of the  
 post cor of Sec 31132 T. 8 N. R. 47 and set a  
 " " " " 516 from which,  
 Elm in dia: bears S 3 E. 20 lks dist, 8 a  
 Beech 24 " " " N 27 E. 31 " "  
 Land the same.  
 Surveyed by Arthur Henrie, L.S.

I certify that the foregoing Transcript of the field  
 notes of Township N. 7. North of Range No 4 West  
 Mer. Ind. has been compared with the original notes in  
 his Office & found to be correct.  
 Surveyor General's Office,  
 Cincinnati Dec. 24. 1841